

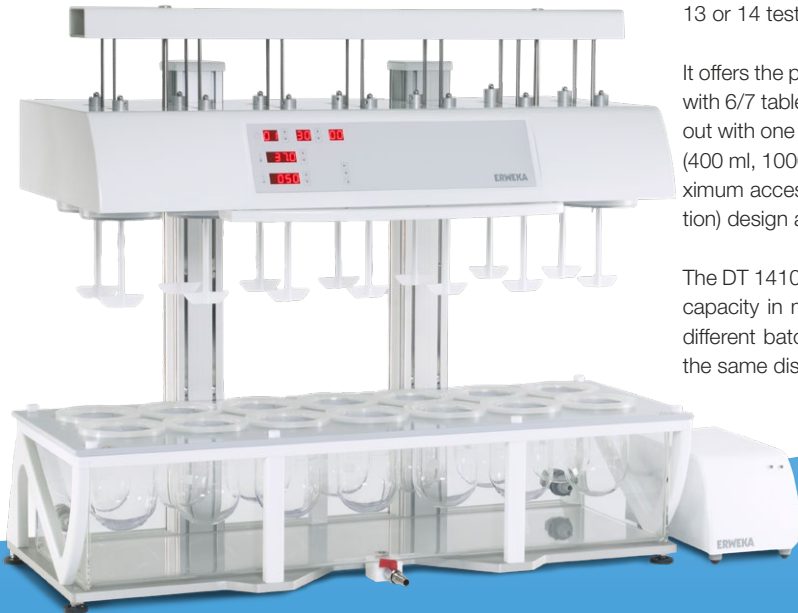
# Dissolution Tester DT 1410 Series

Dissolution Tester USP Apparatus 1, 2, 5 and 6

The 14 Vessel DT 1410 series are based on the DT 720 (user interface such as keypad, displays and menu structure) and offers 12, 13 or 14 test-stations arranged in 2 rows.

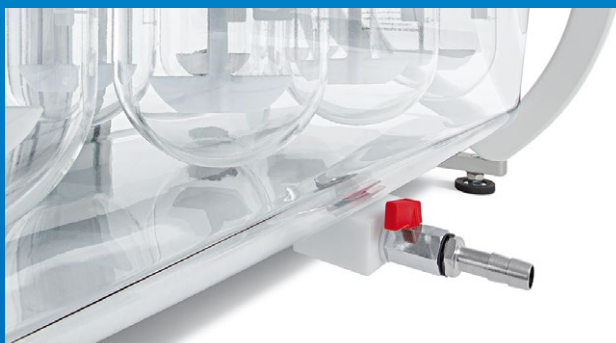
It offers the possibility for one test with 12/13/14 tablets or two tests with 6/7 tablets. The advantage is that two USP tests can be carried out with one bath at equal test conditions. Various Vessel capacities (400 ml, 1000 ml, 2000 ml) are available as well as High-Head- (maximum access) or Low-Head (low-evaporation version; for automation) design are available up to customers specification.

The DT 1410 series are made with users of generic products or high capacity in mind. Due to the configuration the unit offers to run 2 different batches of the same product or 2 different products with the same dissolution monograph at the same time.



## DT 1410 series Highlights:

- Dissolution tester with 12,13 or 14 test stations.
- Can be operated either in High-Head or Low-Head position of the drive heads.
- In Low-Head mode the vessels are sealed to offer the lowest possible evaporation with V-shaped vessel covers.
- Easy and fast lifting of the drive head by manual lifter with gas strut support.
- 3 different locking positions for High-Head, Low-Head or cleaning position of test head.
- Drop magazines operated manually, simultaneously or staggered.
- non-leaking, easy to clean with outlet valve.
- Easy programming using symbol keypad.
- External flow-through heater to reduce influence of vibrations.
- Optimal access to vessels and bath for easy cleaning.
- USP compliant sample withdrawal.
- Non-corrosive design using plastics, alloys and fluoro-polymers.

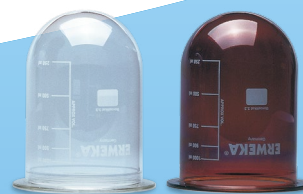


Acrylic water bath with outlet valve



Easy to clean without moving the bath

# DT 1410 Series



## Specifications

Dissolution tester for USP methods 1 (basket), 2 (paddle), 5 (paddle- over- disk) and 6 (rotating cylinder) with 12, 13 or 14 test stations (1412, 1413, 1414)

100% USP/EP/JP compliant

Fulfills all specifications in accordance with FDA "Mechanical Calibration"

LE display for each test parameter with up/down buttons

Evaporation less than 1% (50 rpm / 1000 ml / 37 °C / 24 h)

Lifter column with gas strut support for effortless lifting and lowering of the drive head

Automatic vessel centring via centring rings

External high-power heater, heating range: 30 - 40 °C, even distribution of temperature

Wobble less than 0.2 mm (paddles)

Standard manual tablet drop magazine for max. 14 samples

Height adjustment feet for quick levelling

RS 232 interface for PC connection, USB-B interface for firmware updates

## Options

- + External PT 100 temperature sensor for water bath or media temperature display
- + Automatic tablet drop with control of temperature tolerance (USP)
- + USB-A printer interface for documentation of test run parameters (time, date, rpm, temperatures etc.)
- + Low evaporation vessel cover for High-Head operation
- + External cooling device with autonomous operation
- + Video monitoring/recording of dissolution test in time lapse mode
- + Vessels 1000 ml, 2000 ml, glass or amber glass (UV protected), 250 ml mini glass vessels
- + Paddles, baskets, discs for paddle-over-disc, rotating cylinders, enhancer cell, intrinsic dissolution, felodipine baskets, suppository baskets, extraction cell
- + Dissolution qualification tool kit
- + Upgrade to work as online dissolution system
- + USP compliant automated sampling station with automatic height adjustment of sampling points
- + IQ/OQ/PV documents, IQ/OQ/PV service
- + Maintenance service



Membrane sealed sampling - manual or automated with added sampling station